



Monitoring System of Mechanical Industrial Assets

by **BUHO**
Electronics

The background of the cover is a photograph of an industrial facility, likely a refinery or chemical plant. It shows a complex network of large, cylindrical storage tanks, pipes, and metal walkways. The lighting is bright, and the overall color palette is dominated by metallic greys, greens, and yellows. The image is partially obscured by a large green diagonal shape that contains the text.

Machines overwatching Machines

What is the system based on?

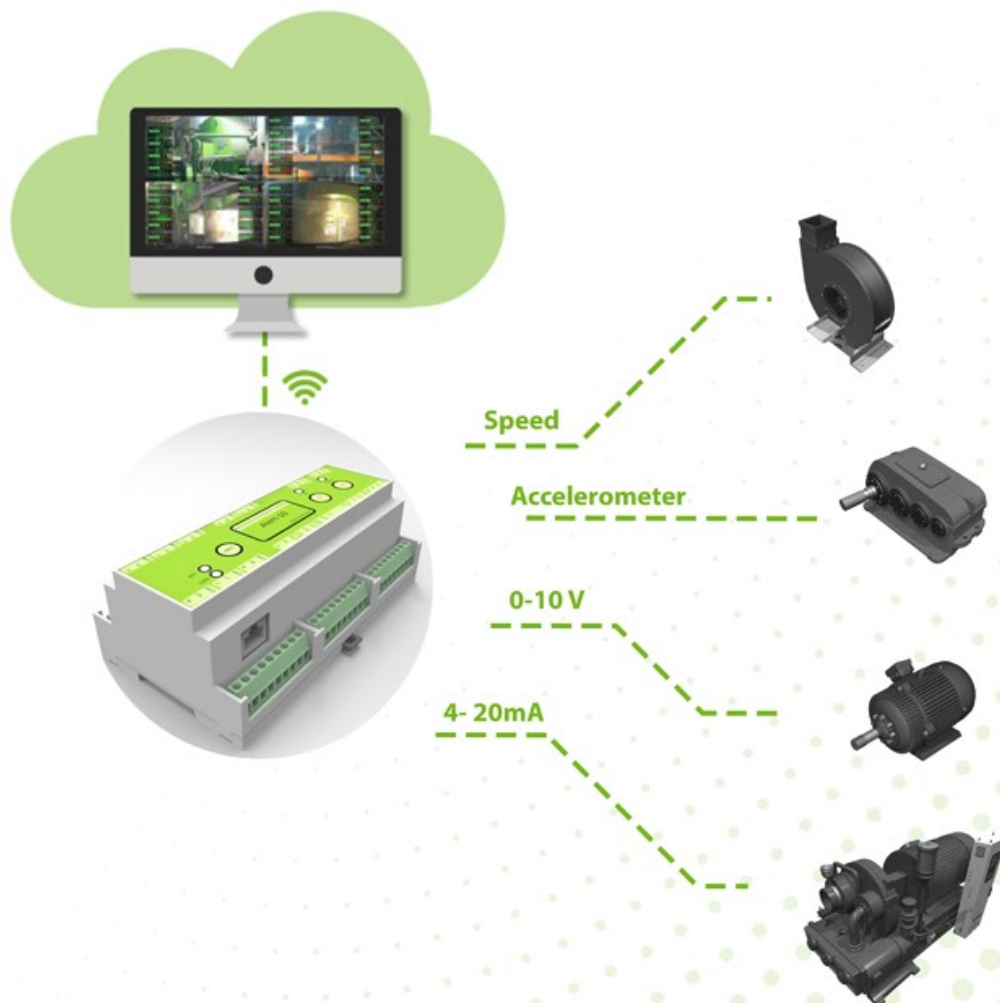
KOS Online is a predictive maintenance system (PDM) through the analysis of vibration and status variables in rotating machinery.

This technology has been used for decades throughout industry to provide objective data on machinery status. The proper use of PDM techniques offers multiple advantages for both small and large-size industry.

The KOS Online system

The **KOS Online** system is made up of KOS Alert 10 data acquirers who collect data from the various assets and the KOS Manager platform which generates machine status information automatically 24/7.

Detect Default in its initial phase, allows monitoring their evolution and planning prevention maintenance more effectively.

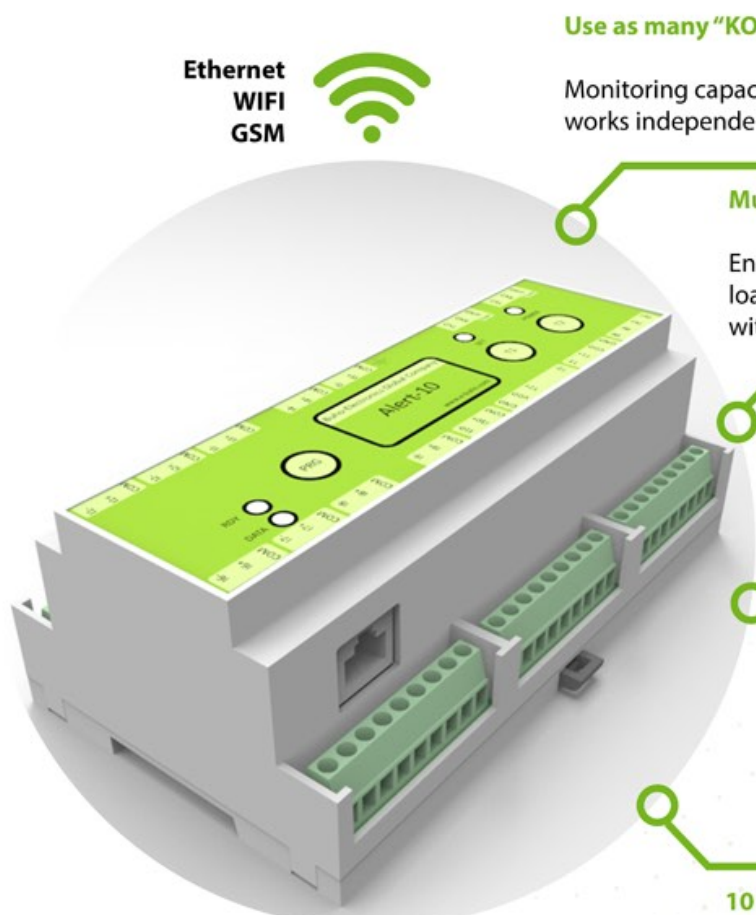


KOS Online is revolutionizing the monitoring of rotating assets by technology and cost.

KOS Alert 10

KOS Alert 10 collects data on vibration and condition variables to allow the mechanical asset to be monitored.

KOS Alert 10 is equipped with state-of-the-art electronics, bringing together more than 20 years of experience in PDM.



**Ethernet
WIFI
GSM**

Use as many "KOS Alert 10" as you wish
Monitoring capacity is not reduced by using more units. Each data logger works independently to not affect the system as a whole.

Multi-condition system
Enables variable machine monitoring operations. Up to 108 load combinations possible providing better monitoring and without sending false alarms.

Automatic Alarms
KOS Alert 10 uses statistical algorithms to detect alarm thresholds automatically for each working condition.

Up to 2,400,000 cpm
KOS Alert 10 captures vibration spectra of up to 2,400,000 cpm, covering the complete range of vibrations generated by industrial machinery.

10 signal inputs and 1 tachometric input channel

- Any standard accelerometer signal
- All types of 0-10 V and 4-20 mA signals

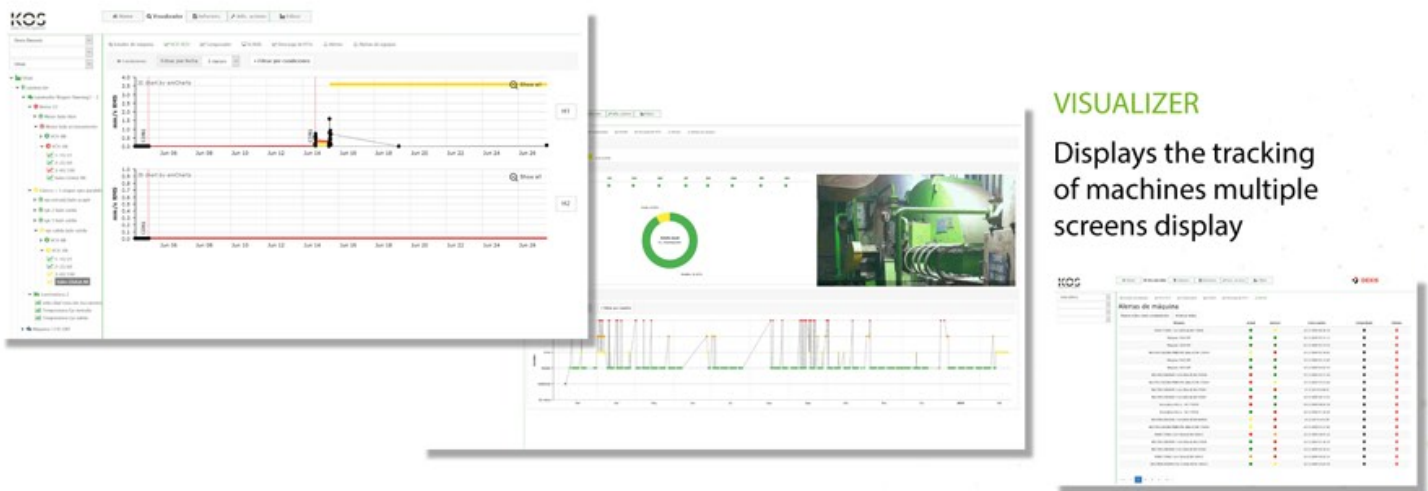
KOS Alert 10 is the data acquisition that allows monitoring and diagnosing all kinds of rotary machines in any productive process.

KOS Manager

KOS Manager is an integrated web-based platform for monitoring management. Only requiring a browser and an Internet connection to keep abreast of and manage the status of your machine stock from anywhere at any time.

Designed to be user-friendly, facilitating access to information and generating PDM reports.

Designed to be user-friendly, facilitating access to information and generating PDM reports.

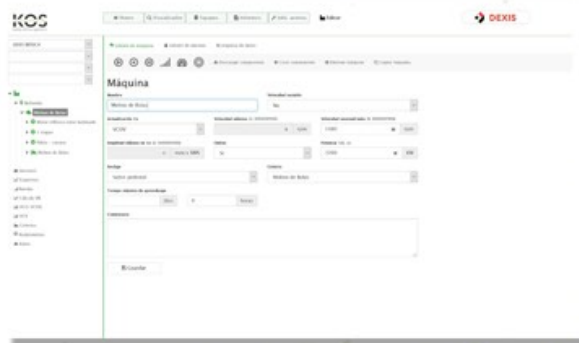


VISUALIZER

Displays the tracking of machines multiple screens display

REPORTS

Management Fall reports and diagnose made in our machinery park.



EDITOR

It has a database of 30,000 bearings. You can configure a machine quickly by using the template.

KOS Manager is designed to be used by both basic users and experts in a simple and intuitive way.

OEM

A customized platform, giving all manufacturers the possibility to offer PDM (Predictive Maintenance) to their customers.

KOS Alert 10 offers personalized services to OEMs, so that predictive maintenance is an added value to their productions

Advantages of the PDM

The PDM provides other advantages:

- Prevents catastrophic deterioration.
- Avoid unscheduled stops.
- Optimizes maintenance stops
- Gains in production due to machine availability

Predictive maintenance in different productive processes

 **Chemical industry**
Applicable to petrochemical plants and other chemical processes.

 **Industrial facilities**
We work with all kinds of industrial equipment.

 **Manufacturing**
Manufacturing of products or consumer goods and industrial machinery. Also for the automotive industry.

 **Minerals and metals**
Includes a wide range of industries, such as mining and metallurgy.

 **Marine transport**
Applicable to demanding environments such as sea transport and naval industry.

 **Fuels and oil**
Including activities such as exploration, prospecting and extracting of fuel, as well as the application on refineries.

 **Pharmaceutical industry and biotechnology**
Useful in research and development, pharmaceutical facilities and manufacturing.

 **Energy generation**
KOS is a solution applicable to energy generation in all kind of facilities, including renewable energies.

 **Forestry**
Forestry machinery, wood cutting and collection, as well as paper recycling facilities and others.